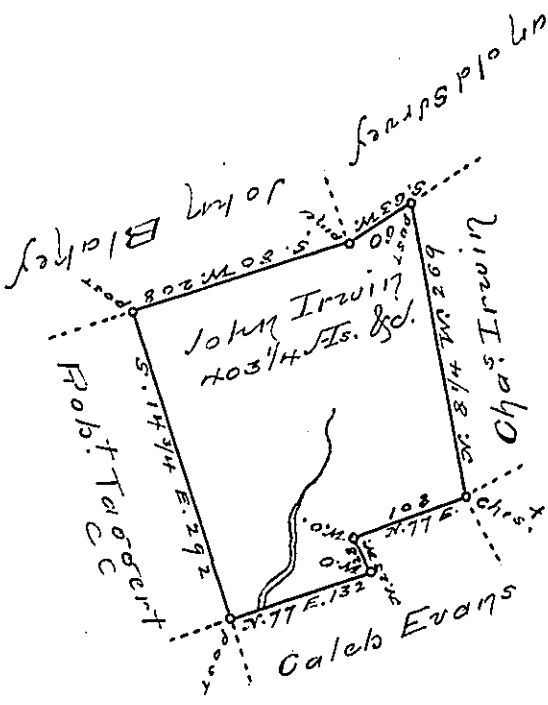


Sug. Loaf -  
Luzerne.



Draft of a tract of land called  
Situata adjoining land Surveyed for Chas. Irwin &  
others in the County of Luzerne containing four  
Hundred & three Acres  $\frac{1}{4}$  & allors.

Surveyed for John Irwin the 1<sup>st</sup> day of  
October 1793 by Virtue of a Warrant dated the  
13<sup>th</sup> day of June 1793

To  
Daniel Brodhead Esq. } by Wm. Gray Esq.  
Suror. Genl.

IN TESTIMONY that the above is a copy of the original remaining on file in the  
Department of Internal Affairs of Pennsylvania, made con-  
formably to an Act of Assembly approved the 16th day of  
February, 1833. I have hereunto set my Hand and caused  
the Seal of said Department to be affixed at Harrisburg, this

— third — day of — March — 1896.

James W. Latta  
Secretary of Internal Affairs.